



Microsoft®

Windows® xp





Microsoft®

Windows® xp



Understanding Windows **XP**



What is Windows **XP**?

- The latest version of the Windows NT family
- Let's look at the Windows' family history
- First came DOS
- Then Windows 1, 2, 3, 3.x then
- Windows 95.... Windows 9.x
- And then
- Windows NT....3.x, 4.0, 2000




Windows Popularity in GUM

	May 2004	May 2005
■ Users of XP	69	165
■ Users of 95/98	302	268
■ Users of 2000	N/A	30



Windows 95, 98, SE, ME

- A shell built on DOS
- Suffered all of DOS's limitations
- The dreaded 640 kB memory 'limit'
- Kept hardware demands relatively small
- Aimed at the consumer market- us!!!!
- Was unstable and crashed!!!!



WINDOWS

DOS



Windows NT, 3.1. 3.5, 4, 2000

- NT stands for 'New Technologies'
- Different to Windows 9.x built for stability
- Low compatibility with Windows 9.x hardware and software
- Most games would not run in NT
- Restricted to what hardware it would run
- No DOS

What to Do?

- Stability or Compatibility?
- Run software v_s rebooting?
- Windows 9.x culminated in Windows Me
- This tacked on 'some stability' onto the Windows 9.x code base
- NT culminated in Windows 2000 Pro

Windows 2000 Pro

- Not good for running games
- Or other software that did not conform to its stringent requirements
- Little compatibility with legacy software
- Not good support for USB

Enter Windows **XP**

- e**X**treme **P**erformance
- A consumer version of Windows
- The stability of NT
- Compatibility with Windows 9.x
- XP Professional is a strict sub-set of XP Home Edition
- As well as all the desktop clients that preceded Professional
- Not built on DOS



What's New in Windows XP?

Easier Installation and Updating

- Dynamic Updates
- Windows Updates
- Files & Settings Transfer Wizard
- Wider selection of drivers
- Good plug and play
- Windows Messenger
- Direct X 8.1 multimedia libraries for gaming



Dynamic Update and Windows Update

- **Dynamic update** runs on Setup and offers to download the latest patches, packages and fixes so that they can be installed during the setup process
- **Windows update** which runs periodically after setup to download the latest patches, packages and fixes. Can be run manually



Address My Documents Go

File and Folder Tasks

- Make a new folder
- Publish this folder to the Web
- Share this folder

Other Places

- Desktop
- Shared Documents
- My Computer
- My Network Places

Details

- Access
- Adobe
- Church
- Combat Flight Simulator 3.0
- Dial up
- Excel
- Family
- Family History Correspondence
- Flight Simulator Files
- FTM
- GOVT
- gum
- Gum Artides in PDF
- IGI Batch Numbers for Aberdeen, Scotland_files
- Job Search
- My Charts
- My eBooks
- My Family Artides
- My Music
- My Pictures
- My PSP8 Files
- My Received Files
- NeroVision
- Notepad
- Power Point
- wsInspector
- ADMIN
- AUSSIE
- BBCAP
- BIRTHDAY
- Biz1Logo
- Bow Death
- Church Sound
- CLIENT DATA
- COLON1
- Conference logistics
- CountOfArtidesByAuthor
- CV
- CV96
- Cv2000.abridged
- Death John Bow
- DMG1
- DOHILLS
- DONADD
- Eric Donaldson
- Family Tree Maker 2005 Using the Fa
- FAMREUN
- Fence 4 Collingwood st
- FETE1
- Helmrich 2 Print Request

More Wizards

- Network Setup wizard
- Add Hardware wizard
- Add Software wizard
- Found new Hardware wizard
(love it with USB)
- Desktop Cleanup wizard (hate it)

More Device Drivers

- XP comes with drivers for many devices including:
- Scanners
- Digital still cameras
- Digital video cameras
- Printers
- But check to see if your device has a newer driver

Installation of Multifunctional Devices

- More likely to get your multifunctional device to work fully under XP
- Printer/Scanner/Fax Device running with all its functions recognized not just some
- It overcomes the previous social ineptitude of earlier Windows versions, and will only ask for the device driver once

Effective Uninstall Back to Windows 98 and Windows Me

- XP provides an effective uninstall feature for rolling back the Windows XP installation to your previous installation of Windows 98, SE or Me –but why would you?
- It can't revert to a previous installation of Windows NT or Windows 2000 Pro

Effective Multi-user capabilities

- You can have multi-users on the same computer and restrict who sees what
- Multiple Users can be logged in each with programs running
- Only one user can be 'active' at any one time
- You can switch users



To begin, click your user name



camerond



Doug



John

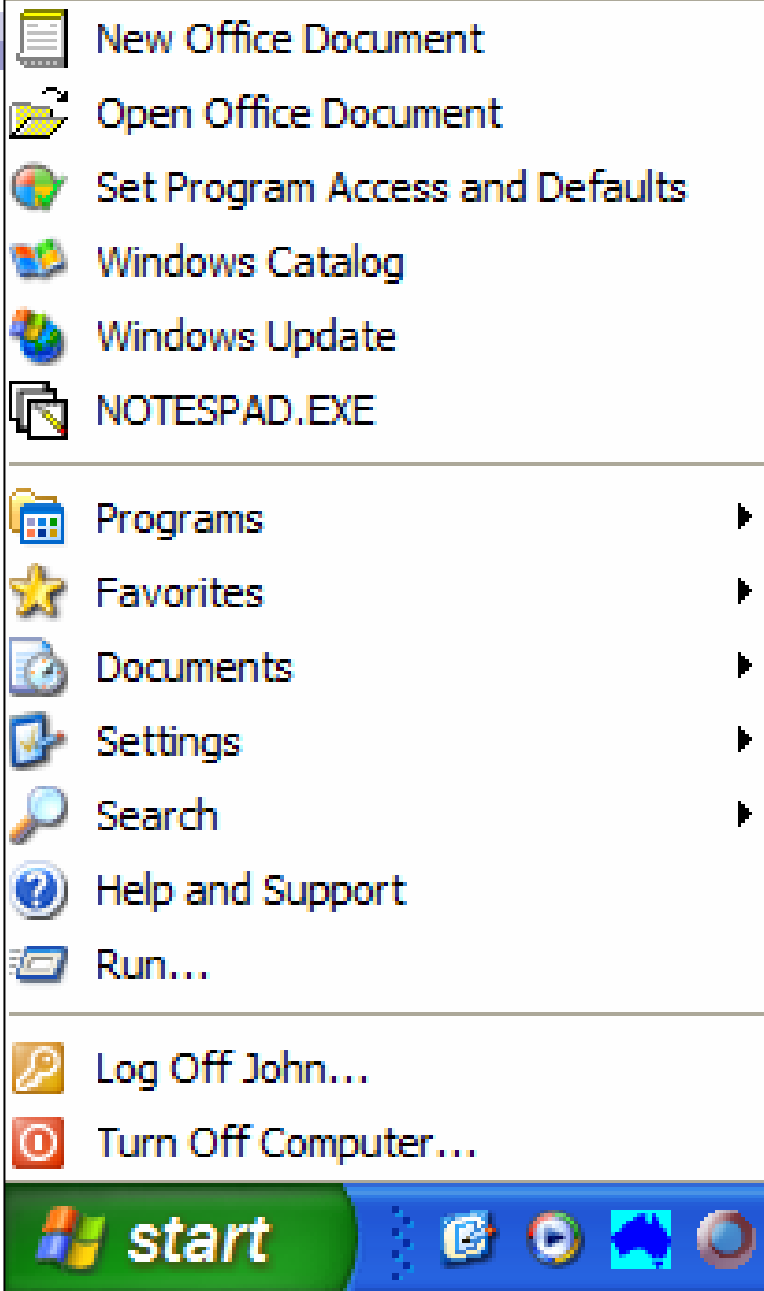
6 programs running.

Enhanced User Interface

- Many visual enhancements
- Some improve usability
- Some are just 'eye candy'
- You can be a Luddite and use the 'Classic' look
- The Classic look uses less resources

Redesigned Start Menu

- Supposedly easier and quicker to use
- Contains two Columns
- The LH column starts off with what XP thinks you ought to know about!!!
- It automatically reconfigures itself to show your most used programs.
- You can pin an item to keep it available



The image shows a Windows XP Start Menu. The top section contains application shortcuts: New Office Document, Open Office Document, Set Program Access and Defaults, Windows Catalog, Windows Update, and NOTEPAD.EXE. The middle section lists system functions: Programs, Favorites, Documents, Settings, Search, Help and Support, and Run... The bottom section contains Log Off John... and Turn Off Computer... The taskbar at the bottom shows the Start button and several open application icons.

- New Office Document
- Open Office Document
- Set Program Access and Defaults
- Windows Catalog
- Windows Update
- NOTEPAD.EXE
- Programs
- Favorites
- Documents
- Settings
- Search
- Help and Support
- Run...
- Log Off John...
- Turn Off Computer...



The image shows a Windows XP desktop environment. The desktop background is blue. The Start menu is open, displaying the user's name 'John' and a list of programs: Internet Mozilla, E-mail Mozilla Mail, MailWasher, Microsoft Flight Simulator 2004, Adobe Acrobat 6.0 Professional, Microsoft Access, Internet Explorer, and OMFBG Safe Mode. The right side of the Start menu shows a list of folders: My Documents, My Recent Documents, My Pictures, My Music, Favorites, My Computer, and My Network Places. Below these are Control Panel, Set Program Access and Defaults, Printers and Faxes, Help and Support, Search, and Run... The taskbar at the bottom shows the Start button, several open application icons, and buttons for Log Off and Turn Off Computer.

John

- Internet Mozilla
- E-mail Mozilla Mail
- MailWasher
- Microsoft Flight Simulator 2004
- Adobe Acrobat 6.0 Professional
- Microsoft Access
- Internet Explorer
- OMFBG Safe Mode
- My Documents
- My Recent Documents
- My Pictures
- My Music
- Favorites
- My Computer
- My Network Places
- Control Panel
- Set Program Access and Defaults
- Printers and Faxes
- Help and Support
- Search
- Run...

All Programs

Log Off Turn Off Computer



Address My Documents Go

File and Folder Tasks

- Make a new folder
- Publish this folder to the Web
- Share this folder

Other Places

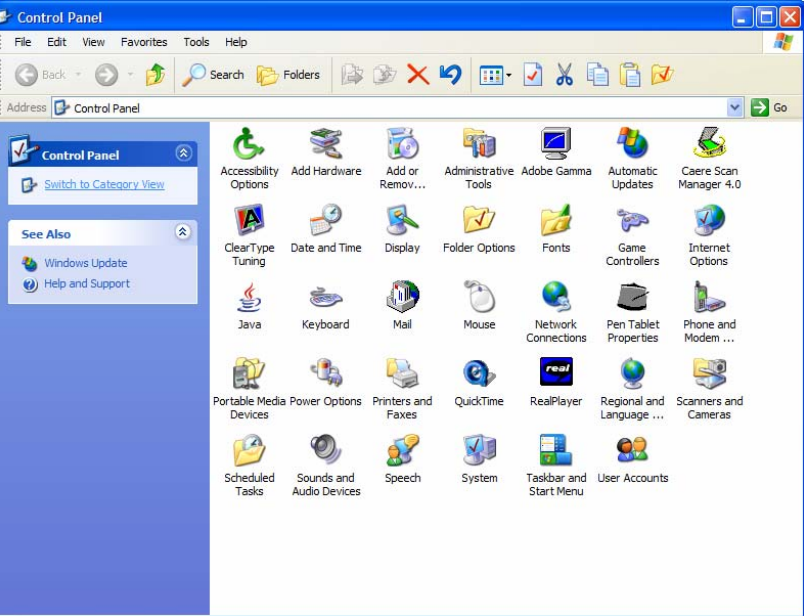
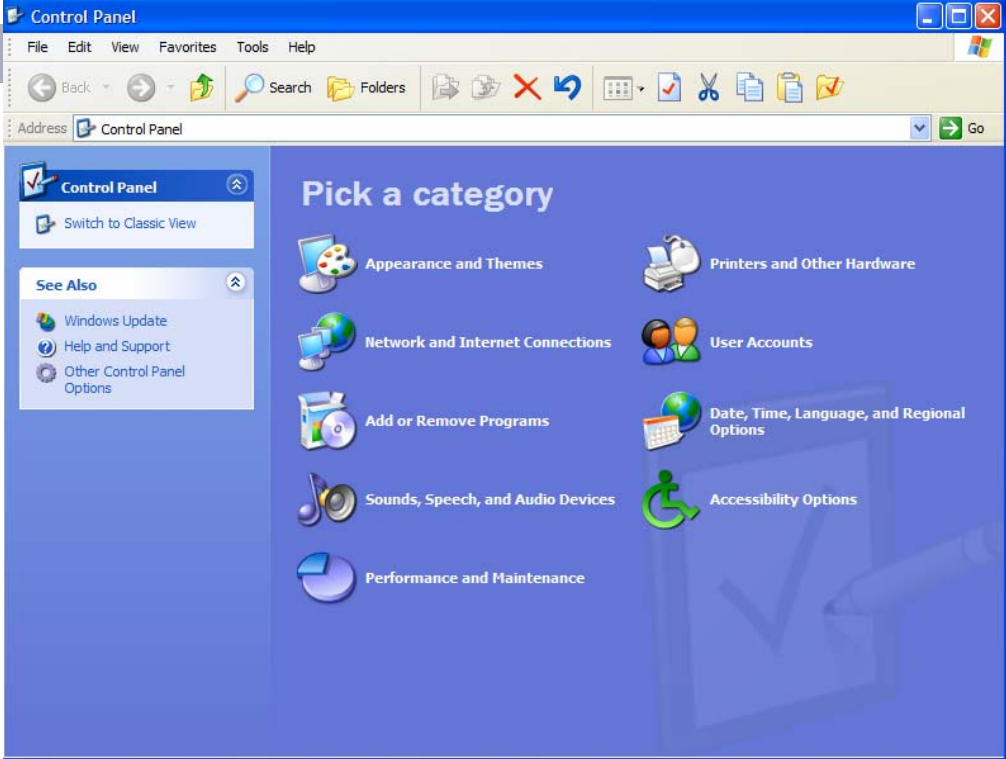
- Desktop
- Shared Documents
- My Computer
- My Network Places

Details

- Access
- Adobe
- Church
- Combat Flight Simulator 3.0
- Dial up
- Excel
- Family
- Family History Correspondence
- Flight Simulator Files
- FTM
- GOVT
- gum
- Gum Artides in PDF
- IGI Batch Numbers for Aberdeen, Scotland_files
- Job Search
- My Charts
- My eBooks
- My Family Artides
- My Music
- My Pictures
- My PSP8 Files
- My Received Files
- NeroVision
- Notepad
- Power Point
- wsInspector
- ADMIN
- AUSSIE
- BBCAP
- BIRTHDAY
- Biz1Logo
- Bow Death
- Church Sound
- CLIENT DATA
- COLON1
- Conference logistics
- CountOfArtidesByAuthor
- CV
- CV96
- Cv2000.abridged
- Death John Bow
- DMG1
- DOHILLS
- DONADD
- Eric Donaldson
- Family Tree Maker 2005 Using the Fa
- FAMREUN
- Fence 4 Collingwood st
- FETE1
- Helmrich 2 Print Request

Redesigned Control Panel

- Can view in Category or Classic View
- Lots of 'Eye Candy'
- This uses up system resources and will make the computer run slower especially a lower tech computer



Task Bar Changes

- Task bar Locking
- Task bar Scrolling
- Task bar Grouping
- Related programs are grouped
- If you have [say] 9 Explorer windows open, you only get one task bar item that will display a stack
- Notification Area (system tray) is collapsed to show on recent icons

Better Audio and Video Features

Windows Media Player 10

- Video
- DVD player
- CD player
- Internet Radio Tuner
- Juke box for WMA and MP3 files
- Supports skins


Ludwig van Beethoven, composer. Seattle Symphony. Gerard Schwarz, director
Symphony No. 9 (Scherzo)



Symphony No. 9 (Scherzo) 1:15


Total Time: 1:15



Buy CD from nineMSN Music



Music Tasks 

-  Play all
-  Shop for music online

File and Folder Tasks 

-  Make a new folder
-  Share this folder

Other Places 

-  My Documents
-  Shared Music
-  My Computer
-  My Network Places

Details 

Name	Size	Type	Date M
 DEFAULT	1 KB	Winamp.PlayList	23/02/2
 Sample Music	1 KB	Shortcut	27/03/2

My Pictures

File Edit View Favorites Tools Help



Address C:\Documents and Settings\John\My Documents\My Pictures

Picture Tasks

- View as a slide show
- Order prints online
- Print pictures
- Copy all items to CD

File and Folder Tasks

- Make a new folder
- Publish this folder to the Web
- Share this folder

Other Places

- My Documents
- My Pictures
- My Computer
- My Network Places

Details

Name	Size	Type	Date M
NVE00001	418 KB	PNG Image	22/02/2



Windows Movie Maker

- A basic package for capturing video,
- Editing video and audio
- Creating Video Files
- Create Video slideshows from still images
- Commercial packages still do a better job

CD Burning

- XP comes with a built in CD-burning capability
- You can burn from Explorer
- You can burn CDs from Media Player that you can play in regular CD players
- It is a stripped down *Nero*
- Commercial packages still do a better job

Compressed Folders

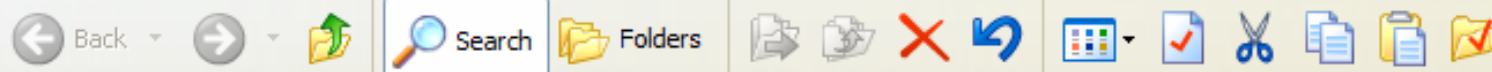
- XP has built-in support for compressed folders
- The ubiquitous ZIP format
- The Microsoft Cabinet (CAB) format
- The nice bit
- View a Zip or a CAB folder seamlessly in Explorer as if it were a regular folder

Improved Features for Sending Attachments

- Windows lets you have the option to optimize the file size and display the size of the pictures so they transfer faster and fit correctly on a recipient's screen

Search Companion

- Enhanced search features for Finding information on your PC
- Or the wider world
- Search for files, computers, or people online or
- Information from the MS Help Center
- You can turn the dog OFF



Search Companion	Name	In Folder	Size	Type
------------------	------	-----------	------	------

To start your search, follow the instructions in the left pane.

What do you want to search for?

- Pictures, music, or video
- Documents (word processing, spreadsheet, etc.)
- All files and folders
- Computers or people
- Information in Help and Support Center

You may also want to...

- Search the Internet
- Change preferences
- Learn more about Search Companion



Publishing on the Web

- XP includes Web Digital- Authoring (WebDAV) that lets you save information to the web from any program
- XP Pro extends this to Personal Web server and Internet information Services which allows you to run a modest-scale Web server on XP

A Sane Implementation of Autoplay

- Prior to XP you had to hold down the Shift key whilst closing the CD tray to stop an instant start
- In XP you can customize autoplay
- You can configure it to take different actions depending on your CD
- Works for DVDs, assorted flash cards and USB drives and Fire Wire hot-plug external drives



- More
- Rem
- gain
- runn
- A mo

ys you to
er that's

Portables

- Better Power Management such as Intel's Speedstep that slows a computer down on batteries but full power on mains
- Auto turn off of display when the lid is shut
- Lower brightness when running off batteries
- Support for Clear Type Font

Faxing and More Help

- Built in Fax client that allows faxing from any program that supports printing
- XP Pro lets you share fax/modems
- Access to the Help & Support Center
- Microsoft Assisted Support
- Tool Center
- Fix a Problem Tool



Search

Set search options

Pick a Help topic



- What's new in Windows XP
- Music, video, games, and photos
- Windows basics



- Networking and the Web
- Working remotely
- Security and administration



- Customizing your computer
- Accessibility



- Printing and faxing
- Performance and maintenance
- Hardware
- Fixing a problem
- Send your feedback to Microsoft

Ask for assistance

- ➔ Invite a friend to connect to your computer with **Remote Assistance**
- ➔ Get **support**, or find information in **Windows XP newsgroups**

Pick a task

- ➔ Keep your computer up-to-date with **Windows Update**
- ➔ Find **compatible hardware and software** for Windows XP
- ➔ Undo changes to your computer with **System Restore**
- ➔ Use **Tools** to view your computer information and diagnose problems

Did you know? Updating...

Network Connectivity

- Network Setup Wizard
- All-User Remote Access Service
- Alternative TCP/IP Configuration
- Network Bridging
- New Version of Internet Explorer 6.x
- MSM Explorer
- .NET Passport Integration

The XP Engine

- Protected Memory Management (cheers)
- System File Protection
- System Restore
- Device Driver Rollback
- NTFS file structure
- Compatibility with Windows 9.x programs
- No DOS but a DOS emulator

SP2 Patch

- It's BIG, 500,000 MB!!!
- The firewall will be turned on
- Messenger will be turned off by default
- Media Bar has been removed from Internet Explorer 6
- New version: Windows Movie Maker 2.1

SP2 Patch

- You can no longer print or print preview a Web page that includes an ActiveX object
- XP SP2 includes a new power-management option for Windows XP. You can now use the tool Powercfg.exe to configure power-management settings from the command line
- The new Wireless Network Setup Wizard makes it easier to create a security-enabled wireless network

SP2 Patch

- When you install SP2, Internet Explorer 6 is updated and includes a new security setting, called 'Binary Behaviours'. To view this setting, click Tools, click Internet Options, click Security, and then click Custom Level.
- The Security Center is a new feature in SP2 that tracks and reports your computer's security settings and sends you alerts if your settings might be putting your computer at risk.

SP2 Patch

- Automatic Updates will help improve the security of your computer. By default, after you install SP2, these updates are installed automatically when you shut down your computer.
- If the 'Turn off computer' dialog box appears, it displays a new security shield icon that gives you the option to 'Update and Turn Off' your computer.
- If you choose this option, the downloaded updates are installed, and then your computer shuts down!

1 Million *COMPLETE* Books Sold!

ONLY \$19.99! U.S.

Refer

Windows® XP Professional

COMPLETE

- Comprehensive Coverage of Microsoft's Latest Version of Windows
- Covers Multimedia Tools, System Maintenance Utilities, and Setting Up a Network
- Learn How to Use All of Windows XP's Communications Tools, Including Instant Messenger



Microsoft
Windows xp



Microsoft®

Windows® xp

